

MODEL 166

16' $\frac{1}{2}$

Pamlico



STANDARD EQUIPMENT

Deluxe hardware consisting of completely wired bow and stern light, bow chocks, stern cleats, deck mooring bit, step pads, combination stern lifting eyes and ski tow rings, complete steering assembly. Mahogany frame two piece windshield complete with automotive type shatter-proof safety glass, protective hardware kit including combination full length anodized aluminum and vinyl gunwale molding, transom bang plate molding, stemband molding, bow eye, full floor, rear cockpit, pegboard half liners, combination tool and battery box, anti-fouling bottom paint and transom drain.

OPTIONAL EQUIPMENT

Vent kit for windshield complete with full length piano hinge, automotive type shatterproof safety glass and stainless steel adjusters. Top, side curtains and aft cover complete with motor pouch in 13 oz. pre-shrunk mildew resistant canvas or deluxe white vinyl. Full length canvas cover complete with windshield and motor pouch. Combination mid-deck and mid-deck storage compartment. Back-to-back seat with storage compartment below. Full width rear seat and backrest kit. Snap-on front seat and backrest upholstery. Back-to-back seat and backrest and snap-on upholstery. Additional G & W factory installed accessories and safety equipment may be selected from our preferred accessory list.



SPECIFICATIONS

Length around gunwale	17'7"
Length thru center	16'5"
Beam amid	75"
Depth forward of amid	38"
Transom width	64"
Depth at transom	28"
O.B.C. certified H.P. up to	85 H.P.
Deck length	67"
Average weight lbs.	740
Suggested capacity lbs.	1,100
Open cockpit area	36 sq. ft.

MODEL 174

17' $\frac{1}{2}$

Hatteras

DELUXE



STANDARD EQUIPMENT

Combination mid-deck and mid-deck storage compartment. Two-piece ventilating mahogany frame windshield complete with automotive type shatterproof safety glass. Complete steering assembly. Protective hardware kit including combination full length anodized aluminum and vinyl gunwale molding, transom bang plate molding, spray rail molding and stem band molding. Deluxe big boat deck hardware including bow and stern light completely wired, bow chocks, stern cleats, step pads, bow eye, combination forward lifting and mooring eye, combination stern lifting eyes and ski tow rings. Transom drain. Adjustable easy access deck and ventilator hatch. Combination stern decking, full built-in self draining safety well, full floors, rear cockpit, half liners, and anti-fouling bottom paint.

OPTIONAL EQUIPMENT

Back-to-back seat with storage compartment below, full fold out rear seat with hidden storage compartment below. Top, side curtain, aft curtain or camper top in deluxe white vinyl or 13 oz. pearl grey, pre-shrunk mildew resistant canvas. Full cover complete with windshield and motor pouch, pearl grey canvas only. Snap-on front seat and backrest upholstery. Snap-on back-to-back seat and backrest upholstery and snap-on rear seat and backrest upholstery. Additional G & W factory installed accessories and safety equipment may be selected from our preferred accessory list.



SPECIFICATIONS

Length around gunwale	19'
Length thru center	17'4"
Beam amid	86"
Depth forward of amid	46"
Transom width	70"
Depth at transom	31"
O.B.C. certified H.P. up to	110 H.P.
Deck length	78"
Average weight lbs.	960
Suggested capacity lbs.*	1,800
Cockpit area	41 sq. ft.

MODEL 174-O

17½'

Hatteras

OVERNIGHTER



STANDARD EQUIPMENT

Flying bridge with automotive type shatterproof safety glass, anodized aluminum ventilating side cabin windows. Complete steering. Protective hardware kit including combination full-length anodized aluminum and vinyl gunwale molding, transom bang plate molding, spray rail and stem band molding. Deluxe big boat deck hardware including bow light, fold-down flying bridge light and cabin compartment light — completely wired. Bow chocks, stern cleats, step pads, bow eye, combination forward lifting and mooring eye, combination stern lifting and ski-tow eyes, transom drain, rear cockpit half liners. Adjustable combination easy access deck to cabin hatch and ventilator. Stern decking and complete built-in self draining safety well. Anti-fouling bottom paint. Cabin top safety grab-rails. Cabin bunk cushions, and pilot seat.

OPTIONAL EQUIPMENT

Companion pilot seat. Full width fold-out rear seat with concealed storage compartment below. Cabin bulkhead and sliding door assembly. Vent kit for flying bridge windshield. Top, side curtains, aft curtain or camper top in 13 oz. pearl grey, pre-shrunk, mildew resistant canvas or deluxe white vinyl. Canvas full cover with motor pouch, pearl grey only. Snap-on rear seat and backrest upholstery. Mahogany, cruiser type ship's wheel. Built-in gas tank. Stainless steel bow rail. Cabin interior liners, sea closet and electric bilge pump. Additional G & W factory installed accessories and safety equipment may be selected from our preferred accessory list.



SPECIFICATIONS

Length around gunwale	19'
Length thru center	17'4"
Beam amid	86"
Depth forward of amid	46"
Transom width	70"
Depth at transom	31"
Deck length	46"
Cabin length	72"
Headroom	48"
Bunk length	72"
Cockpit area	44 sq. ft.
Average weight in lbs.	980
O.B.C. certified H.P. up to	110 H.P.
Suggested load capacity	1,800

MODEL 191

19'

Pacific



STANDARD EQUIPMENT

Two-piece ventilating mahogany frame windshield with automotive type shatterproof safety glass. Full floor, rear cockpit half liners. Complete steering assembly. Protective hardware kit consisting of combination full length anodized aluminum and vinyl gunwale molding, transom bang plate molding, spray rail molding, and stem band molding. Big boat hardware including bow and stern light (completely wired, bow chocks, stern cleat, step pads, bow eye, combination forward lifting and mooring eye, combination transom lifting ring and ski tow eyes. Transom drain, adjustable easy access forward deck and ventilating hatch. Stern deck and fully built-in self draining safety well. Spacious center deck and storage compartments and anti-fouling bottom paint.

OPTIONAL EQUIPMENT

Full fold out rear seat. Front seat cushion and snap-on backrest upholstery. Rear seat cushion and snap-on backrest upholstery. Top, side curtain, aft curtain or camper top in deluxe white vinyl or 13 oz. pearl grey, pre-shrunk, mildew resistant canvas. Full cover, complete with windshield and motor pouch — pearl grey only. Built-in gas tank, stainless steel bow rails and electric bilge pump. Additional G & W factory installed accessories and safety equipment may be selected from our preferred accessory list.



ALSO AVAILABLE 19' PACIFIC HOLIDAY CRUISER
Ask Dealer for Complete Specifications

SPECIFICATIONS

Length around gunwale20'11"
Length thru center19'3"
Beam amid91"
Depth forward of amid50"
Transom width79"
Transom depth37"
Deck length82"
O.B.C. certified H.P. up to 140 H.P.
Average weight lbs1,290
Suggested capacity2,340
Cockpit area47 sq. ft.

MODEL 204-W

20½

Atlantic

WEEKENDER



STANDARD EQUIPMENT

Flying bridge, mahogany frame windshield with automotive type shatterproof safety glass. Three section cabin windshield adjusts for ventilation and step-through forward hatch. Stainless steel sink, fresh water system complete with galley pump. Formica topped galley. Formica topped work table. Complete steering assembly. Protective hardware kit consisting of combination full length anodized aluminum and vinyl gunwale molding, transom bang plate molding, spray rail molding and stem band molding. Big boat hardware including bow and stern light completely wired. Bow chocks, stern cleats, step pads, bow eye, combination forward lifting and mooring eye, combination transom lifting ring and ski tow eyes. Transom drain, adjustable easy access forward deck and ventilating hatch. Stern deck, full built-in self draining safety well. Anti-fouling bottom paint. Pilot seat. Ventilating kit for flying bridge windshield complete with automotive type shatterproof safety glass.

OPTIONAL EQUIPMENT

Full fold out rear seat. Rear seat cushion and snap-on backrest upholstery. Top, side curtain, aft curtain or camper top in deluxe white vinyl or 13 oz. pearl grey, pre-shrunk, mildew resistant canvas. Full cover, complete with windshield and motor pouch, pearl grey. Built-in gas tank, stainless steel bow rails and electric bilge pump. Additional G & W factory installed accessories and safety equipment may be selected from our preferred accessory list.



SPECIFICATIONS

Length around gunwale	22'2"
Length thru center	20'4"
Beam amid	96"
Depth forward of amid	52"
Depth at transom	36"
Transom width	80"
Deck length	58"
Cabin length	80"
Headroom	56"
Bunk length	80"
Cockpit area	50 sq. ft.
O.B.C. certified H.P.	up to 160 H.P.
Average weight	1,385
Suggested capacity lbs.	2,530



STANDARD EQUIPMENT

Heavy aluminum frame windshield with automotive type shatter-proof safety glass. Full floor, protective hardware kit consisting of combination full length anodized aluminum and vinyl fender molding, transom bang plate molding, spray rail molding and stem band molding, bow eye, combination forward lifting ring and mooring eye, combination transom lifting rings and ski tow eyes. Bow chocks, stern cleats, bow light, stern light, electric horn, fire extinguisher, engraved labels on all switches, upholstered engine hatch with foam cushion, green & white vinyl covered decks, rear cockpit hull liners, and center deck with storage compartments. Single lever controls, mechanical steering (Steermaster), and shipping cradle. Standard color—Green Mist—Dark Green Top Plank. Full rear seat.

OPTIONAL EQUIPMENT

White vinyl convertible top, side curtains and aft curtain. Full length mooring cover w/windshield and motor pouch in 13 oz. pre-shrunk mildew resistant canvas. Additional G & W factory installed accessories and safety equipment may be selected from our preferred accessory list.

NEW Model 2000 Capri Adventurer

Same standard equipment as above plus the following — Red and white, two-tone paint (red hull with white top plank) Red and white nautolex deck, red and white deluxe upholstered front bucket seats with storage pockets and storage compartment below. Matching rear seat upholstery. Nautolex floor and motor box. Ventilating aluminum windshield w/safety glass.



SPECIFICATIONS

Length around gunwale	22'2"
Length thru center	20'4"
Beam	96"
Draft	17"
Freeboard Forward	31"
Freeboard Aft	25"
Bottom 5 ply Makore	1/2"
Sides 5 ply Makore	3/8"
Decks Makore (vinyl covered)	3/8"
Main Stringers	2 1/4" x 6"
Fuel Capacity	30 gal.
Throttle & Clutch Control	
Single Lever Hydraulic	
Power	175 h.p. Gray or 160 Interceptor D.D.



STANDARD EQUIPMENT

Two piece ventilating mahogany frame windshield with automotive type shatterproof safety glass. Full floor, rear cockpit half liners. Complete steering assembly. Protective hardware kit consisting of combination full length anodized aluminum and vinyl gunwale molding, transom bang plate molding, spray rail molding and stem band molding. Big boat hardware including bow and stern light completely wired. Bow chocks, stern cleat, step pads, bow eye, combination forward lifting and mooring eye, combination transom lifting ring and ski tow eyes. Transom drain, adjustable easy access forward deck and ventilating hatch. Stern deck with fully built-in self-draining safety well. Spacious center deck and storage compartments and anti-fouling bottom paint.

OPTIONAL EQUIPMENT

Full fold out rear seat. Front seat cushion and snap-on backrest upholstery. Rear seat cushion and snap-on backrest upholstery. Top, side curtain, aft curtain or camper top in deluxe white vinyl or 13 oz. pearl grey, pre-shrunk, mildew resistant canvas. Full cover, complete with windshield and motor pouch, pearl grey only. Built-in gas tank, stainless steel bow rails and electric bilge pump. Additional G & W factory installed accessories and safety equipment may be selected from our preferred accessory list.



ALSO AVAILABLE 20 $\frac{1}{2}$ ' ATLANTIC I/O
Ask Dealer for Complete Specifications

SPECIFICATIONS

Length around gunwale	22'2"
Length thru center	20'4"
Beam amid	96"
Depth forward of amid	52"
Depth at transom	36"
Transom width	80"
Deck length	84"
Cockpit area	54 sq. ft.
O.B.C. certified H.P. up to	160 H.P.
Average weight lbs.	1,310
Suggested capacity	2,530

MODEL 222

22'

Chesapeake

C-VEE



STANDARD EQUIPMENT

Three piece ventilating mahogany frame windshield. Full floor, rear cockpit half liners. Anodized aluminum gunwale molding w/vinyl insert. Transom bang plate molding. Spray rail and stem band molding. Bow and stern lights. (Comp. wired w/ switches), Bow chocks. Large forward deck cleat. Stern cleats. Step pads. Transom pad eyes. Bow eye. Enclosed V-bunks under forward deck w/easy access hatch. Pilot foot rest. Forward deck hatch. Mechanical steering. Louvered shelter cabin doors.

OPTIONAL EQUIPMENT

Convertible top. Side curtains. Aft curtain. Camper top. Hatch screen. V-bunk mattresses. Compass. Spotlight. Marine toilet. Anchor, anchor line and thimble. Dock lines. Hull liners. Vinyl decks. Vinyl cockpit flooring. Rear seat w/seat w/storage locker. Additional G & W factory installed accessories and safety equipment may be selected from our preferred accessory list.

Available in Outboard — Inboard-Outboard.
Prices Upon Request for Dual Installations.



ALSO AVAILABLE 22' CABIN CRUISER
Ask Dealer for Complete Specifications

SPECIFICATIONS

Length (gunwale)	23'7"
Length (centerline)	22'2"
Beam	8'
Depth forward	54½"
Transom width	7'6"
Transom depth	46"
Deck length	9'3"
Cockpit area	62 sq. ft.
Bottom 5 ply makore	½"
Sides 5 ply makore	¾"
Forward deck 5 ply makore	¾"
Covering boards (mahogany)	¾"
Frames forward (mahogany)	1½" x 3"
Ribs steam bent solid oak on	
6" centers	¾" x 1½"
Short ribs on 6" centers in bottom	¾" x 1½"
Transom double laminated (mahog.)	1¾"



STANDARD EQUIPMENT

Heavy aluminum frame ventilating windshield. Anodized aluminum gunwale molding with vinyl insert, transom bang plate molding, spray rail and stem band molding. Bow and stern lights, bow chocks, stern cleats, forward deck cleat, step pads, transom pad eyes, and bow eye. Open V-bunks under forward deck, control console with mechanical steering, Gray & White vinyl covered decks, vinyl covered floorboards, fully ventilated forward & aft cockpit paneling, upholstered combination back to back sleeper seats and hull drain. Standard color — Hull, Grey — White Top Plank & Boot Top.

OPTIONAL EQUIPMENT

White vinyl convertible top, side curtains and aft curtain. Full length mooring cover w/windshield and motor pouch in 13 oz. pre-shrunk mildew resistant canvas. Additional G & W factory installed accessories and safety equipment may be selected from our preferred accessory list.



SPECIFICATIONS

Length around gunwale	23'10"
Length thru center	22'4"
Beam Amid	8'
Depth forward of amid	52"
Transom Width	80"
Depth at transom	47"
Deck Length	70"
Average weight in lbs.	2000
O.B.C. Certified H.P.	160 h.p.

ALSO AVAILABLE AS HARDTOP AND CRUISETTE

25'

Catalina

MODEL 2500



STANDARD EQUIPMENT

Forward (large) bow cleat, bow chocks, stern cleats, bow light, stern light, bow and stern poles w/pennant, ensign, electric horn, fire extinguisher and combination fender & toe rail molding. Engraved labels on all switches, upholstered engine hatch w/foam cushion, vinyl deck, vinyl covered cockpit flooring, ventilating aluminum frame windshield, single lever controls, V-bunks, mechanical steering (steermaster), shipping cradle, boot top and full cockpit liners, Standard color, white hull, blue top plank. Forward deck hatch, built-in pilot and companion pilot seat with storage beneath.

OPTIONAL EQUIPMENT

Convertible top w/boot (vinyl), side curtains, aft curtain, drop curtain, bow rail, anchor 13 lb., anchor line 150', boat hook, compass (Corsair) and marine toilet. Bilge pump (Lovett) (manual) bilge pump (automatic) (Lovett), sea cock, spotlight (remote control), anchor light, hatch screen, windshield wiper (American Bosch), front seat upholstery, rear seat upholstery and V-berth mattresses.

SPECIFICATIONS

Length (gunwale)	26'5"
Length (centerline)	24'9"
Beam	9'
Draft	22"
Freeboard forward	47"
Freeboard aft	38"
Bottom 9 ply Makore	1/2"
Sides 5 ply Makore	3/8"
Decks 5 ply Makore	3/8"
Transom 5 ply Makore	1/2"
Frames forward	
Philippine Mahogany	1 1/8" x 3"



ALSO AVAILABLE 25' CUSTOM CABIN CRUISER
Ask Dealer for Complete Specifications

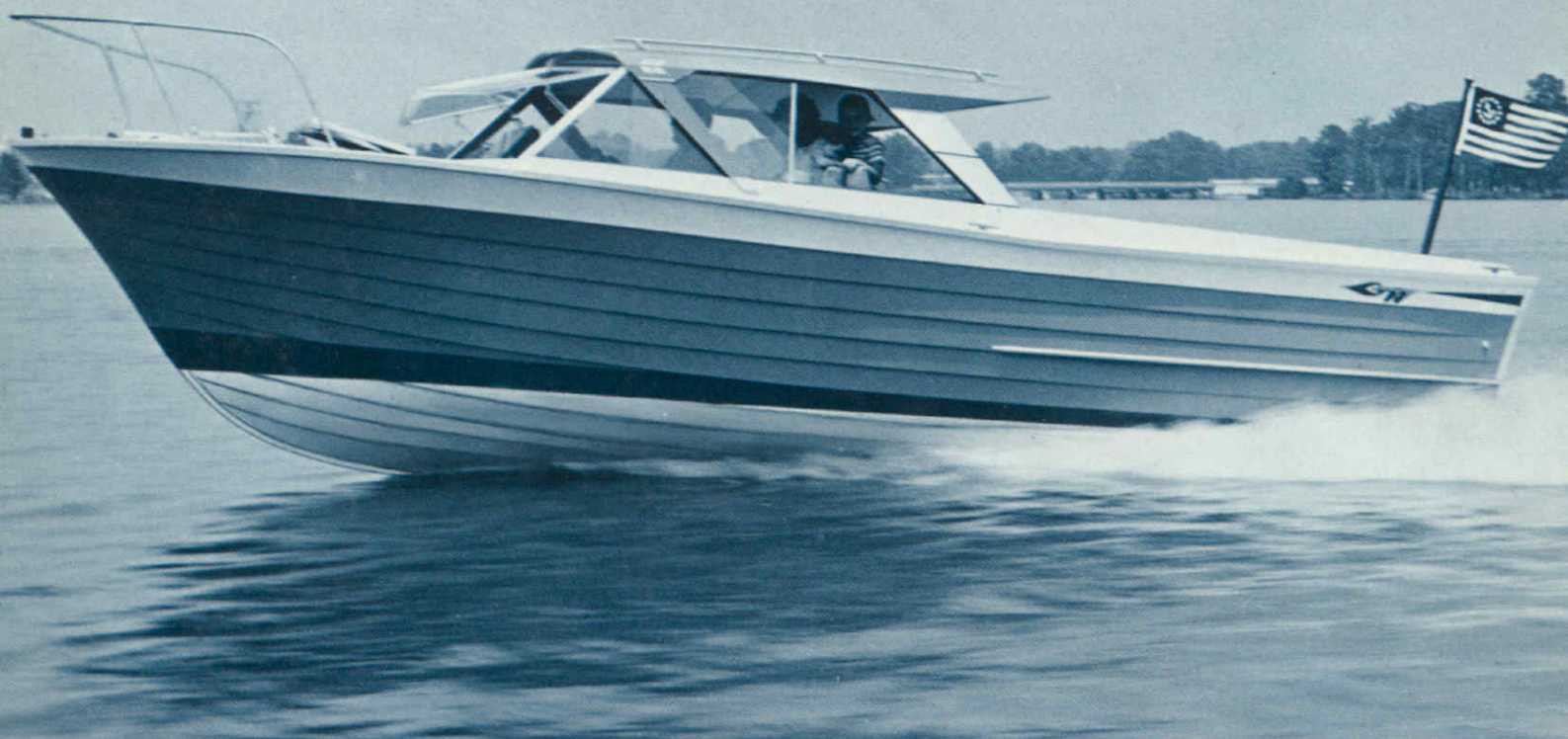
Ribs steam bent	
Solid Oak (8" centers)	3/4" x 1 1/16"
Doubled on bottom	
Cockpit floor (vinyl covered)	
Douglas Fir, ply	3/4"
Outer keel	1 5/8"
Main stringers 4	2 1/4" x 9"
Fuel capacity	52 gallons
Electrical system 12V W/Alternator	
Clutch control	Hydraulic
Throttle control	Single lever
Stem band	Solid brass
Mahogany Binnacle Box W/Oil &	
Temperature Gauge, Electric	
Ammeter, Tachometer	
Power 220 H. P. Gray Direct Drive (STD)	
Direct Drive	
Power Options — 215 H. P. Interceptor	

MODEL 2500

25'

Catalina

HARDTOP



INBOARD/OUTBOARD MODEL SHOWN

STANDARD EQUIPMENT

Large Bow Cleat. Bow Chocks. Stern Cleats. Bow light. Stern Light. Bow and Stern Poles W/Pennant. Ensign. Electric Horn. Fire Extinguisher. Combination Fender & Tow Rail Molding. Engraved Labels on all Switches. Upholster Engine Hatch W/Foam Cushion. Blue & White Vinyl Deck. Blue Vinyl Covered Cockpit Flooring. Ventilating Windshield. Single Lever Controls. V-Bunks Forward. Ride Guide Steering. Forward Deck Hatch. Side Glass (Sliding). Forward & Aft Hull Liners Perforated Head Liner, Shipping Cradle. Standard Color — Hull, White — Blue. Top Plank — Black Boot Top. Built-in Pilot and Companion Seat With Storage Beneath on Inboard Models.

OPTIONAL EQUIPMENT

Aft curtain, drop curtain, bow rail, anchor 13 lb., anchor line 150', boat hook, compass (Corsair), marine toilet, bilge pump (Lovett) manual, bilge pump (Lovett) automatic, sea cock, spotlight (remote control) anchor light, hatch screen, windshield wiper (American Bosch), V-berth mattresses.

SPECIFICATIONS

Length (Gunwale) 26'5"
 Length (Centerline) 24'9"
 Beam 9"
 Draft 22"
 Freeboard Forward 47"
 Freeboard Aft 38"
 Headroom (Under Hardtop) 6'
 Sleeping Accommodations 4
 Bottom Makore 1/2"
 Sides, Decks, Hardtop —
 Makore 3/8"
 Frames Forward (Mahog.) . 1 1/8" x 3"
 Ribs Steam Bent Oak
 (on 8" Centers) 3/4" x 1 1/4"
 Short Ribs in Bottom
 (on 4" Centers) 3/4" x 1 1/4"
 Main Stringers (4) 2 1/4" x 9"
 Fuel Capacity 2-30 Gal. Tanks
 Windows — Ventilating Weather
 Sealed
 Weight 5000#
 Power Options on I/O Models-In-
 board Power Same as 2500 Open

MODEL 2600

Bahama

26'

SPECIFICATIONS

Gunwale Length—27'
 Beam—9'8"
 Draft—23"
 Freeboard—FWD - 4'3" - Aft - 3'1½"
 Headroom—6'1"
 Bottom—½" Marine Plywood 5 Ply
 Sides—Lapstrake ½" Marine Plywood 5 Ply
 Deck—¾" Ply-Vinyl Covered
 Cabin Top—¾" Ply-Vinyl Covered
 Frames—⅞" x 3" Phil. Mah.
 Cockpit Floor—½" Ply-Vinyl Covered
 Keel—1⅞" x 7" Laminated Phil. Mah.
 Stem—2½" x 3" White Oak
 Skeg—Full Dept.—1¾" Mah.
 All Structural Members treated with TBTO Preservative
 Transom—Slice Cut ½" Utile
 Full Capacity—40 Gal.
 F. W. Capacity—20 Gal.
 Electrical Equipment—12 Volt Utilizing Hi-Capacity Alternator
 Clutch—Hydraulic
 Steering—American Chain—(Mechanical)
 Stem Band—Aluminum
 Instrument Console—New Style, Varnished
 Having Electric Tac Ammeter, Temperature and Oil Pressure
 Windows—Sliding Side and Hinged Command Station Windshield
 Weight—Approximately—4700 Lbs.
 Height on Cradle—10'2"

OPTIONAL EQUIPMENT

Deluxe Vinyl Navy Top and Vinyl Side Curtains	\$275.00
Vinyl Cockpit Cover	90.00
Automatic Bilge Pump	64.50
26" Helm Seat	66.00
Corsair Compass	50.00
110 Volt Dockside Power (3 Outlets)	125.00
Drapes & Rods (sides & front complete)	\$112.50

F.O.B. GREENVILLE \$7,145.00



STANDARD EQUIPMENT

Galley — Textolite Top, Two Burner Alcohol Stove, Stainless Steel Sink, 3.3 Ft. Ice Box, Dish Locker, Glass Rack, Locker Under Sink. Dinette Converts To Double Berth, Table Textolite covered, Vinyl Covered Cushions, Stowage under Seats and Platform, Fwd. Stateroom, Two full Berths, Vinyl Covered Cushions, Stowage under Berths, Locker in Forepeak. Sea Rails, Toilet Room — Completely Enclosed. Hull Liners Vinyl Covered and Perforated Vinyl Headliner. Cabin Floor fully carpeted. Deck Equipment, 8" Chrome Plated Forward Cleat, 2-8" Chrome Plated Cleats Aft. Stainless Steel Cabin Top Handrails and Aft Stanchions Stainless International Rule Running Lights, 1 Fire Extinguisher, Bow Chocks, Horn, Cockpit Drains, Cast Aluminum FWD Deck, Power 195 Gray Direct Drive Hydraulic Clutch, 1" Stainless Shaft, Manganese Bronze Strut, Rudder Port and Shaft Log. Group "A" Cruismaster Equipment, Stainless Bow Rail, Lovette Bilge Pump (Automatic), Exhaust Silencer, Windshield Wiper, Exhaust Blower, Rudder & Shaft Zincs.

This is the Luxurious,

27'

MODEL 2700

27' *Catalina*
HARDTOP

SPECIFICATIONS

Gunwale Length — 28'5"
Center Line Length — 26'11"
Beam — 10'5"
Draft — 2'0"
Freeboard — Fwd - 4'4"
Freeboard — Aft - 3'0"
Headroom — 6'3"
Planking — Bottom - 1/2" 5 Ply Marine
Planking — Sides - 1/2" 5 Ply Marine
Deck — 1/2" Ply Vinyl Covered
Cabin Top — 3/8" Ply Vinyl Covered
Frames Fwd — 1 1/8" x 3" Phil. Mah.
Ribbs — Steam bent White Oak 7/8" x 1 1/2"
Spaced on 8" centers and double in bottom.
Cockpit Floor — 1/2" Ply Vinyl Covered
Cockpit Area — 72 Sq. Ft.
Keel Batten — 1 1/8" x 5 1/2" Phil. Mah.
Keel — 2 1/2" x 3" Laminated Phil. Mah.
Stem — 3" x 3" Laminated White Oak
All structural members treated with TBTO Preservative
Transom — Slice cut 1/2" Makore with White Oak framing — Painted
Fuel Capacity — 60 Gal. in two tanks
F.W. Capacity — 20 Gal.
Electrical Equipment — 12 Volt. Utilizing Hi-Capacity Alternator
Clutch — Hydraulic
Steering — American Chain Push Pull
Stem Band — Brass
Instrument Console — New Style, Varnished, having Elec. Tach, Ammeter, Temperature and Oil Pressure Gauges
Windows — Sliding Side and Hinged Wind-shields
Weight — Approx. 6200 lbs.
Height on cradle — 9'0"



STANDARD EQUIPMENT

Galley — Textolite top, 3.3 cu. ft. ice box, stainless steel sink, water system and stowage. Dinette — converts to double berth, Textolite covered table, vinyl covered cushions, stowage under seats and platform. Fwd Stateroom — 2 berths with vinyl covered cushions, stowage under berths, locker in forepeak, hanging locker aft of starboard berth, concealed toilet aft of port berth or stand up head fully enclosed aft of dinette. Note: For sleeping or privacy entire forward area may be closed in by door and curtain but normally remains open for light and air for a spacious feeling. Helm seat built in and upholstered. All hull liners and bulkheads vinyl covered for ease of maintenance. Full size flying bridge with mah. seat and back and vinyl covered cushions. Bridge also includes steering and controls mounted on varnished mahogany dash, stainless handrail and ladder. DECK equipment: 4 - 25' docklines, anchor with 100' line, 10" chrome plated fwd. cleat, 2 - 8" chrome plated cleats aft, stainless steel engine room vents, stainless steel handrails, stainless international rule running lights, ship's bell, 2 fire extinguishers, bow chocks, horn, cockpit drains, cast aluminum fwd. deck hatch. Power — Chrysler 210 with 1.5:1 RED., stainless steel shaft, manganese bronze strut, shaft log and rudder port.

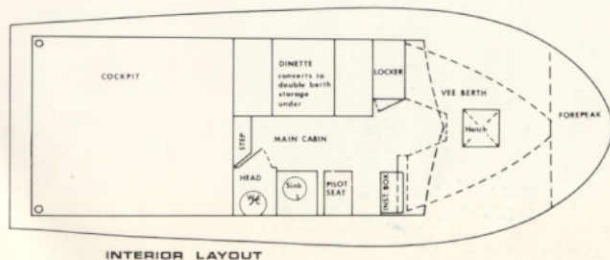
Single Power

Twin Power

Prices of materials and specifications subject to change without notice. All orders will be invoiced at prevailing prices at time of delivery. All orders shipped FOB, Greenville, N. C.

OPTIONAL EQUIPMENT

Aft Bulkhead for Complete Cabin Closure	\$375.00
Automatic Bilge Pump	\$ 64.50
Corsair Compass	\$ 50.00
110 Volt Dockside Power	\$125.00
Flying Bridge Cover	\$ 38.00
Hardtop Aft Curtain	\$ 96.50
Privacy Curtain	\$ 35.00



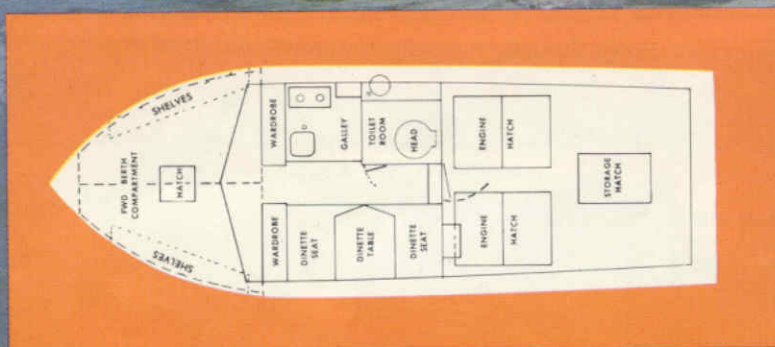
INTERIOR LAYOUT



28

Gulf Stream
EXPRESS CRUISES

EXPRESS CRUISER



SPECIFICATIONS

Length (gunwale)	29'5"
Length (centerline)	27'7"
Beam	10'
Draft	24"
Freeboard forward	51"
Freeboard aft	36"
Headroom	6'2"
Bottom 9 ply Makore-African Cherry Mahogany	½"
Sides 5 ply Makore	½"
Deck 5 ply Makore vinyl covered	½"
Cabin top 5 ply Makore vinyl covered	¾"
Frames forward — Philippine Mahogany	1½" x 3"
Frames — steam bent solid Oak	¾" x 1½"
Spaced in 8" center on sides and double frames in bottom	
Cockpit floor 5 ply Royal Harborite	½"
Side and aft deck 5 ply Makore vinyl covered	½"
Outer keel — Solid Oak	1½"
Transom 5 ply Makore	½"
Fuel capacity	80 gallons
Fresh water capacity	20 gallons
Electrical system 12 volt twin Alternator for high output	
Clutch control	Hydraulic
Throttle control single lever	Chrome plated
Stem band	Solid brass
Mahogany binnacle box	
Instruments — Electric Ammeter, Oil, Temperature	
and Tachometer	
Windows — weather sealed	Ventilating
Weight (approximately)	7400#
Height (shipping data)	10'4"
Sleeping accommodations	4
Solid Philippine Mahogany Taffrail — complete with	
stainless steel stanchions	

MODEL 2800

28'

Gulf Stream

OPEN MODEL WITH HARDTOP

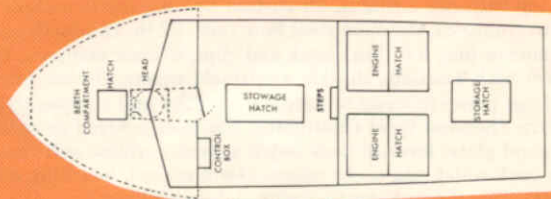


STANDARD EQUIPMENT

Ships bell, bow chocks, stern cleats, dock lines, electric horn, fire extinguisher (2), forward deck hatch, international navigation lights, stern pole and ensign. Combination fender and toe rail molding, freeing ports (cockpit floor), toilet, ventilator bilge, V-berths (less cushions), ventilating windshield w/safety glass, side glass (sliding), engraved label on all switches, vinyl covered cockpit floor, vinyl covered decks and hardtop, shipping cradle, bridge deck steps, perforated headliner, hull liners and boot top.

OPTIONAL EQUIPMENT

Aft curtain (hardtop to cockpit floor), stainless steel bow rail, 22 lb. Danforth anchor, anchor chocks, anchor line, boat hook and clips 6 ft., 110 volt dockside power w/2 outlets and electric windshield wiper. Electric bilge blower, electric bilge pump (manual or automatic), pilot seat, companion pilot seat, 12 volt electric chemical toilet chlorinator, radio ground plate, forward deck hatch screen, fish box, sea cock toilet, sea dock engine twin screw, galley, dinette, fishing bridge w/dual controls, V-berths cushions, boarding and swimming ladder, transom mount, depth finder, searchlight, solid Philippine Mahogany taffrail complete with stainless steel stanchions.



POWER OPTIONS AND SPECIFICATIONS
FOR OPEN MODEL AND SPORT FISHERMAN
SAME AS GULFSTREAM EXPRESS CRUISER

ALSO AVAILABLE 28' GULFSTREAM SPORT FISHERMAN
Ask Dealer for Complete Specifications



GRADY-WHITE

Boat Company • Greenville, North Carolina

30'**MODEL 3000***Sea Skiff***SPECIFICATIONS**

Length (Gunwale)	32'0"
Length (Centerline)	30'0"
Beam	11'3½"
Draft	28"
Freeboard Fwd.	54"
Freeboard Aft	46"
Cabin Headroom	6'7"
Sides	Marine Duraply Mah. ½"—5 Ply
Cabin Top	Marine Duraply ½"—5 Ply Fir
Sawn Frames	1½"x3" Phil. Mah.
Bent Frames	7/8"x1-9/16" Oak On 8" Centers
Cockpit Flooring	½"—5 Ply Fir
Decks	½"—5 Ply Fir
Main Stringers	(4) 2¼x10" Fir
Outer Keel	1¾x12" Phil. Mah.
Transom Curved	½"—5 Ply Mah. Ply & 7/8 Phil. Mah.
Fuel Capacity	104 Gal. (Single or T/S)
Water Capacity	20 Gal.
Electrical System	12 Volts
Clutch Control	Hydraulic Single Lever W/Morse Cable
Throttle	Single Lever W/Morse Cable
Stem Band	5/8" H.O. Solid Brass
Fiberglass Binnacle Box With—Ammeter—Oil Pressure—Water Temp. & Electric Tach.	
Windows	Weather Sealed
Sleeping Accommodations	6
Approximately WT	8200 lbs. TWIN SCW.

STANDARD EQUIPMENT

GALLEY: Exceptionally large Ell-Shaped Galley. Two burner alcohol stove, 3.3 cu. ft. ice box. 8 qt. Stainless steel sink, Pressure water system. Sliding dish locker doors (Acrylite Pattern). Hanging dish locker with glass rack, and stowage. **CONVERTIBLE LOUNGE AND DINETTE:** Stowage behind hinged back and table hanger, drawer underneath, stowage under dinette seat bottom. **VEE BERTH AREA:** One full size bunk with stowage under. One three-quarter size with stowage under. Vee Berth U.P.H. Backrest with storage area. **TOILET ROOM:** Exceptionally large with ample storage area. Molded fiberglass sink with fiberglass top. Mirror. Two doors for complete privacy from Vee Berth or aft living area of cabin. **INTERIOR FINISH:** Paneling and Bulkheads — Warm beige trim, natural satin varnish mahogany, color-coordinated interior. **TRIM:** Fiberglass binnacle, fresh water pressure system (20 gals.). Hull drain, stainless steel taft rail with chain gates, cockpit drains, ship-side & transom paneling, teak toe rail, vinyl covered decks and cabin tops, C.P. chocks and cleats, ventilating side and front W/S sash, aluminum anodized mouldings, stainless steel bow rail. Fiberglass drapes. **ENGINE:** Mufflers cast iron, delux throttle and clutch controls, Aqua Meter instrument panel, dual trumpet horn. **EQUIPMENT:** 2½ lb. Dry chemical fire extinguishers, automatic bilge pump, windshield wiper, pilot seat, ship's bell, gasoline sounding rod, exhaust blower, zinc collars and plates, anchor with 100' line and shipping cradle.

PRICE F.O.B. GREENVILLE \$12,750.00



MODEL 3300

33'

Sea Skiff



SPECIFICATIONS

Length (gunwale)	35'7"
Length (centerline)	33'4"
Beam	12'
Draft	24"
Freeboard forward	58"
Freeboard aft	48"
Cabin headroom	6'6"
Bottom	1/2" 9 ply
Sides	1/2" 5 ply
Cabin top and hardtop	3/8" 5 ply
Frames forward	1 1/8" x 4" on 18" c
Ribs — steam bent Oak	7/8" x 1 1/8" on 8" c
Cockpit flooring	3/4" Plywood
Side & aft deck	3/4" Plywood
Main stringers — 4	2 5/8" x 10" Fir
Outer keel	1 5/8" White Oak
Transom (curved)	3/4" Mahogany
Fuel capacity	120 gallons
Water capacity	20 gallons
Electrical system	12 volt
Clutch control	Hydraulic
Throttle control	Single lever
Stem band	Solid brass
Mahogany binnacle box	
Instruments — Ammeter, Oil Pressure, Water Temperature, Tachometer	
Windows — weather sealed	Ventilating
Weight (approximately)	9600#
Sleeping accommodations	6

STANDARD EQUIPMENT

Two burner alcohol stove, 110 volt dockside power with 3 outlets, electric refrigerator, wardrobe thru main cabin bulkhead, hanging wardrobe, stainless steel galley sink, toilet with stainless steel sink and vanity. Perforated cabin headliner, convertible dinette with cushions, private stateroom forward, convertible lounge, ships bell, bow pole and pennant, bow chocks, stern cleats and mooring bit. Dish locker w/sliding glass doors, dock lines, dinette and lounge storage, electric horn, combination fender & toe rail molding, fire extinguishers, fresh water system, freeing ports (cockpit floor), stainless steel cabin and hardtop safety rails. Forward deck hatch, stern pole and ensign, international navigation lights, bilge ventilators, side ventilating cabin & hardtop windows, ventilating hardtop windshield, vanity mirror and engraved labels on all switches. Plush carpet in cabin floor, vinyl covered decks, cabin top, hardtop and cockpit floors, cabin window screens, cabin curtains and rods, hull drain, bilge pump, bilge blower, pilot seat and shipping cradle.

Standard Power — 195 H. P. Graymarine Twin Screw hydraulic reduction gear. Other power upon request. Ask your dealer.



STANDARD EQUIPMENT

Custom hardware with wired bow and stern lights, bow chocks, bow eye, stern cleats, step pads, forward deck cleat, combination stern lifting eyes and ski tow rings. Complete standard cable steering assembly. Heavy "aluminum" frame ventilating windshield with automotive type shatterproof safety glass. Protective hardware kit including combination full length anodized aluminum and vinyl gunwale molding, transom bang plate molding and stem band molding. Blue & white vinyl covered decks, blue vinyl covered floorboards. Fully ventilated forward & aft cockpit hull liners. Blue & white upholstered combination back to back sleeper seats. Modular speedometer w/end plates,

footrest, anti-fouling bottom paint, and transom drain. Standard color—Hull G & W Blue—White Top Plank.

OPTIONAL EQUIPMENT

White vinyl convertible top, side curtains and aft curtain. Full length mooring cover w/windshield and motor pouch in 13 oz. pre-shrunk mildew resistant canvas. Additional G & W factory installed accessories and safety equipment may be selected from our preferred accessory list.



Capri SERIES

SPECIFICATIONS

CAPRI MODELS	165	175	195	205
Length around gunwale	17'7"	19'	20'11"	22'2"
Length thru center	16'5"	17'4"	19'3"	20'4"
Beam amid	75"	86"	91"	96"
Depth forward amid	38"	46"	50"	52"
Transom width	64"	70"	79"	80"
Depth at transom	28"	31"	37"	36"
Deck length	67"	78"	82"	84"
Suggested capacity in pounds	1,100	1,800	2,340	2,530
Average weight in pounds	740	975	1,290	1,310
O. B. C. certified H.P. to	85 h.p.	110 h.p.	140 h.p.	160 h.p.

• PICTURED ABOVE FROM LEFT TO RIGHT ARE MODELS 165 CAPRI, 205 CAPRI I/O, 175 CAPRI

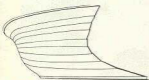
• PICTURED AT RIGHT IS MODEL 19 FT. CAPRI I/O





Superior Craftsmanship makes
G & W Hulls the most Treasured
in the Clinkerbuilt field!

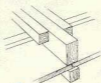
The next boat you buy will probably be a major investment. Your decision as to the type of boat you will buy will, most likely, be based on how you will use the boat, the size of your family, the styling of the boat and most important of all — what you will be getting for your invested dollar. Will you be getting better than normal performance? Will you be getting a boat that is safety engineered to the maximum detail? Will you be getting beauty beyond compare? Will you be getting dependable boat design . . . design meant for boats — not automobiles? When you have conscientiously asked yourself all these questions and made a fair comparison, chances are you'll be seriously considering the purchase of a G & W clinkerbuilt. Why? Dealers and boat owners alike tell us that G & W clinkerbuilds are the best quality purchase in the field. They tell us that there's more dollar value in a G & W than any competitive hull. Perhaps this is why we're one of the fastest growth companies in our field. Perhaps this is why you'll see more and more families enjoying G & W boating in your area this year. Why not join 'em?



B-B



7



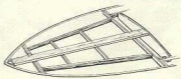
1



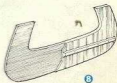
4



B-A



MANOYANY REINFORCED DECKS



8

Red 1965



THE MOST TREASURED



Quality BOAT LINE





BASIC SPECIFICATIONS

- 1 Full length, triple laminated keel (4 times stronger than natural sawed timbers).
- 2 Pre-shaped, full length solid oak stringers.
- 3 Full length, solid oak ribs spaced 6" on center.
- 4 Full length, 5 ply, 10 m.m. makore marine planking precision beveled and securely machine bolt fastened with silicon bronze machine bolts, 3 bolts between each rib from keel to above water line — 2 bolts between each rib above the water to gunwale with Thiokol Polysulphide-Polymer bonded seam construction.
- 5 Each hull finished with 4 coats heavy body marine spar varnish on interior, decking, gunwale and transom plus hand rubbed and filled stain on all bright work for lasting beauty.
- 6 Four coats marine paint on hull exterior plus anti-fouling bottom paint.
- 7 Solid mahogany covering boards and stern decking plus triple beam gunwale construction on all open models.
- 8 Double planked mahogany transom with full width bolted solid oak transom support.
 - (A) Protective hardware kit including combination full length anodized aluminum and vinyl gunwale molding, transom bang plate spray rail molding, and stem band molding.
 - (B) Full flared bow offers "safest, softest and driest ride in boating." Full quality Utile Mahogany Planking used in all models.